



**RETECH**  
A SECO/WARWICK COMPANY

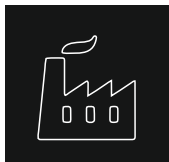
# **METAL POWDER ATOMIZATION SYSTEMS**

Metal Powder Atomization System



# METAL POWDER ATOMIZATION SYSTEMS

## INDUSTRIES:

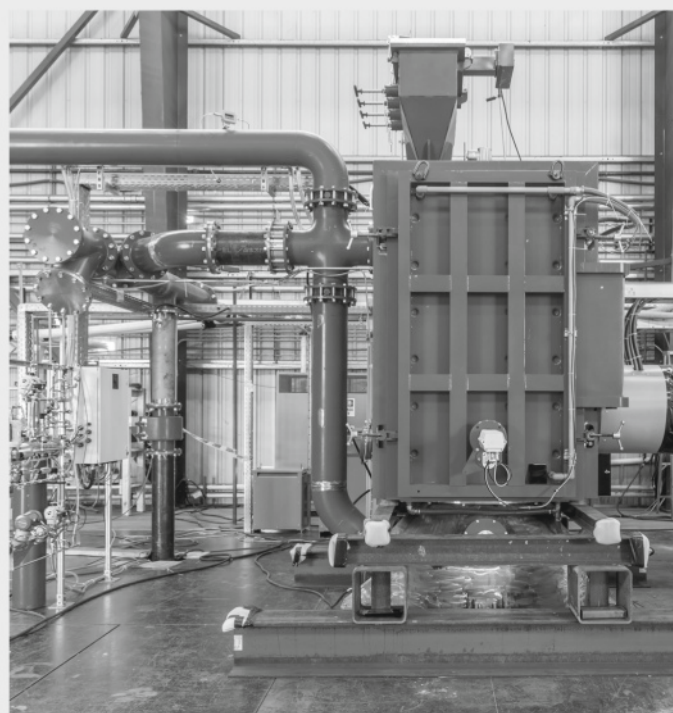


Aviation, Automotive, Defense, Energy,  
Medical and Research Centers

## MATERIALS:



Titanium, Refractory and Reactive  
Materials, Nickel-Based, Copper, and  
Steel Alloys as well as Precious Metals



### HIGH PERFORMANCE POWDERS:

Spherical metal powders produced on Retech atomization equipment can be characterized as having high flowability, high packing density and high purity (low interstitials). In addition, Retech atomizers typically have lower total operating costs. In addition, Retech can provide equipment for recycling of scrap or non-spherical metal powders.

### SPECIFICATIONS:

Power Output (kW):	240
Feed Stock:	50 or 100 mm dia. Bar
Alloying Capability:	No
Batch Size (kg):	50 to 100
Annual Capacity (tpy):	50 to 250
L x W x H (m):	4.87 X 5.48 X 10.97

### REGA



Retech Powder Systems combine induction melting technology and inert gas atomization to allow for a broad range of potential powder sizes of oxygen sensitive metals & alloys. Designed in a range of capacities ranging from laboratory, pilot and production scale, Retech systems are tailored to meet the needs of our customers.

### SPECIFICATIONS:

■ Power Output (kW):	<b>R-CIGA</b> 50 to 1,300
■ Feed Stock:	Ingots or Elementals
■ Alloying Capability:	Yes
■ Batch Size (kg):	5 to 2,000
■ Annual Capacity (tpy):	50 to 3,000
■ L x W x H (m):	9.14x 9.14x 8.53 (for Pilot Scale)

## About Retech Systems LLC, a SECO/WARWICK Company

Since 1963, Retech Systems LLC has been a global leader in the supply of vacuum metallurgical processing equipment. As an integral part of SECO/WARWICK Group, the most fully integrated furnace manufacturer in the world, we provide customer access to a wide range of in-house resources, including technology, material and process development. Whether a laboratory scale furnace or complete custom design, identifying customer needs, as well as understanding the importance of producing cost-effective technologies is the foundation upon which Retech is built.



***SECO/WARWICK***

INVENTION MEETS RELIABILITY