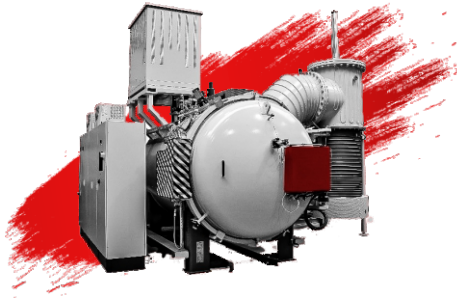


# FURNACES FOR SALE

**CHECK!**

**SECO/WARWICK**



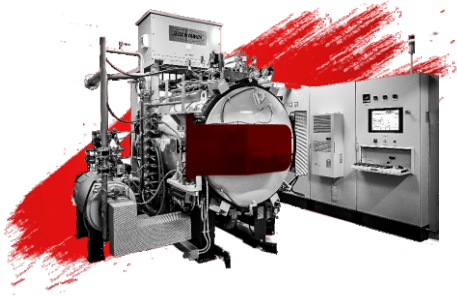
Useful dimensions (W x H x L)	<b>900 x 800 x 1500mm</b>
Maximum load gross weight	<b>1200kg</b>
Thermal insulation	<b>graphite</b>
Ultimate vacuum	<b>1x10<sup>-5</sup> mbar</b>
Max. quenching pressure	<b>6 bar abs.</b>
Scope of supply	<b>Furnace, control cabinet</b>

**NEW!**



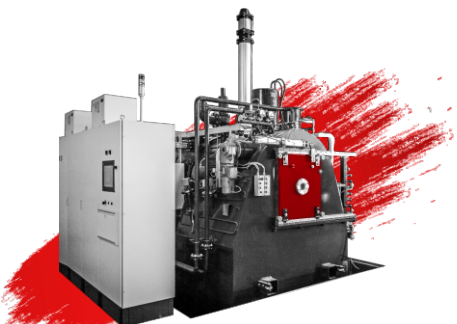
Useful dimensions (W x H x L)	<b>600 x 600 x 900mm</b>
Maximum load gross weight	<b>800kg</b>
Thermal insulation	<b>graphite</b>
Ultimate vacuum	<b>1x10<sup>-2</sup> mbar</b>
Max. quenching pressure	<b>15 bar abs.</b>
Scope of supply	<b>Furnace, control cabinet</b>

**SOLD OUT!**



Useful dimensions (W x H x L)	<b>500 x 100 x 500mm (up to 400 x 400 x 600mm)**</b>
Maximum load gross weight	<b>20kg (up to 200kg)**</b>
Thermal insulation	<b>metal</b>
Ultimate vacuum	<b>1x10<sup>-4</sup> mbar</b>
Max. quenching pressure	<b>1,5 bar abs.</b>
Scope of supply	<b>Furnace, control cabinet, gas cabinet, Closed Loop Water System and loader</b>

**SECONDHAND!**



Useful dimensions (W x H x L)	<b>900 x 900 x 1200mm</b>
Maximum load gross weight	<b>1200kg</b>
Thermal insulation	<b>graphite</b>
Ultimate vacuum	<b>range 10<sup>-2</sup> mbar</b>
Cooling system	<b>oil quenching (quench tank volume ~10.000l)</b>
Scope of supply	<b>Furnace, control cabinet</b>

**SECONDHAND!**

**CONTACT / Adam Adamek** SalesTeam Leader  
adam.adamek@secowarwick.com