

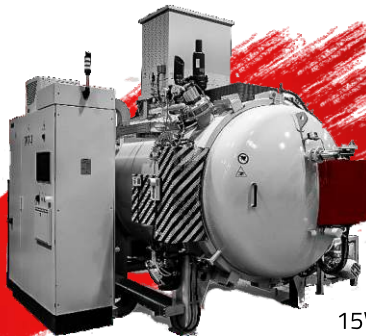
VACUUM FURNACES

available for **QUICK DELIVERY**



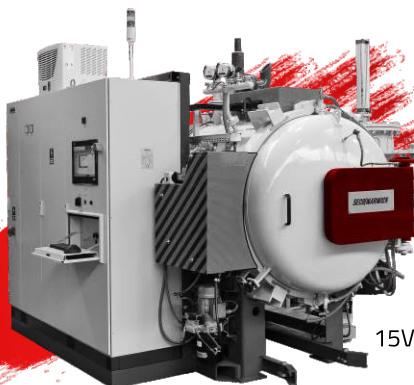
15VP-9912

Useful dimension	900x800x1200 mm
Maximum load weight	1500 kg
Thermal insulation	graphite
Ultra-high vacuum	1x10⁻² mbar
Working pressure	15 bar abs.
Scope of supply	Furnace, control cabinet
Ready for shipment	SOLD



15VP-669

Useful dimension	600x600x900 mm
Maximum load weight	800 kg
Thermal insulation	graphite
Ultra-high vacuum	1x10⁻² mbar
Working pressure	15 bar abs.
Scope of supply	Furnace, control cabinet
Ready to shipment	OCTOBER 2022

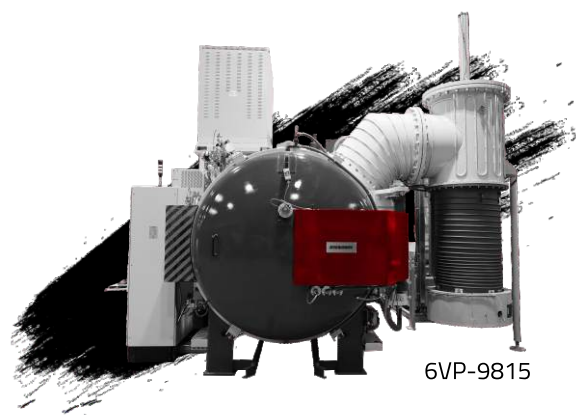


15VP-446

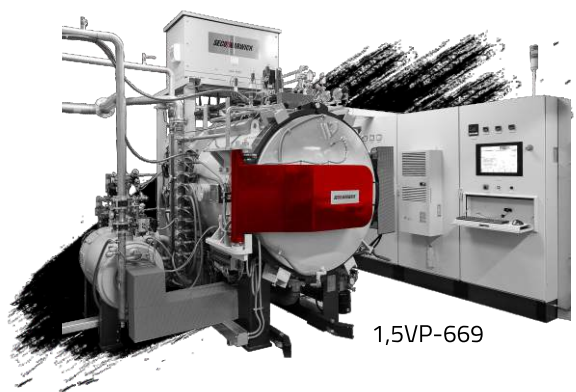
Useful dimension	400x400x900 mm
Maximum load weight	200 kg
Thermal insulation	graphite
Ultra-high vacuum	1x10⁻² mbar
Working pressure	15 bar abs.
Scope of supply	Furnace, control cabinet
Ready to shipment	OCTOBER 2022

VACUUM FURNACES

available for **QUICK DELIVERY**



Useful dimension	900x800x1500 mm
Maximum load gross weight	1200 kg
Thermal insulation	graphite
Ultimate vacuum	1x10⁻⁸ mbar
Max. quenching pressure	6 bar abs.
Scope of supply	Furnace, control cabinet
Ready to shipment	~2 WEEKS



Useful dimension	500x100x500 mm (up to 600x600x900 mm)**
Maximum load gross weight	20 kg (up to 200 kg)**
Thermal insulation	metal
Ultimate vacuum	1x10⁻⁶ mbar
Max. quenching pressure	1,5 bar abs.
Scope of supply	Furnace, control cabinet, gas cabinet, Closed Loop Water System and loader
Ready to shipment	~2 WEEKS



Useful dimensions (W x H x L)	960x840 x1200 mm
Maximum load gross weight	1200 kg
Thermal insulation	metal
Ultimate vacuum	1x10⁻⁷ mbar
Max. quenching pressure	1,5 bar abs.
Scope of supply	Furnace, control cabinet
Ready to shipment	~2 WEEKS